

A PLAT SHOWING OLD CUTTERS SUBDIVISION

A REPLAT OF LOTS 1A, 2A, 3 & 4, A REPLAT OF DREXLER RANCH SUBDIVISION, AND A PORTION OF LOT 4 BUCKHORN SUBD. 2ND ADDITION
LOCATED WITHIN SECTIONS 3 & 4, T.2 N., R.18 E., B.M., CITY OF HAILEY, BLAINE COUNTY, IDAHO

OCTOBER 2007

GRAPHIC SCALE

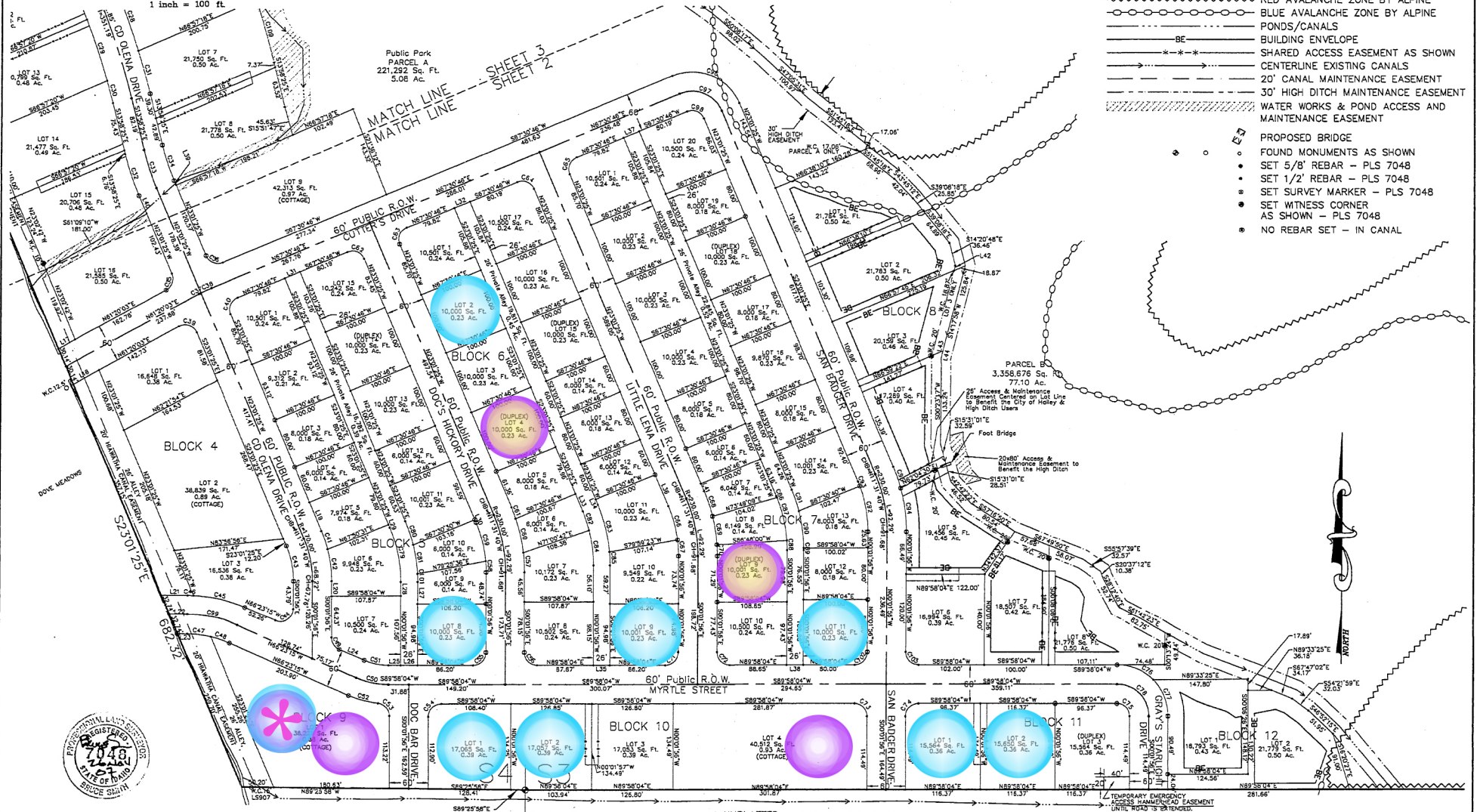


(IN FEET)
1 inch = 100 ft.

LEGEND

- SUBDIVISION BOUNDARY
- LOT LINES
- INTERIOR ROAD CENTERLINES
- EXTERIOR ROAD CENTERLINES
- RED AVALANCHE ZONE BY ALPINE
- BLUE AVALANCHE ZONE BY ALPINE
- PONDS/CANALS
- BE BUILDING ENVELOPE
- SHARED ACCESS EASEMENT AS SHOWN
- CENTERLINE EXISTING CANALS
- 20' CANAL MAINTENANCE EASEMENT
- 30' HIGH DITCH MAINTENANCE EASEMENT
- WATER WORKS & POND ACCESS AND MAINTENANCE EASEMENT

- PROPOSED BRIDGE
- FOUND MONUMENTS AS SHOWN
- SET 5/8" REBAR - PLS 7048
- SET 1/2" REBAR - PLS 7048
- SET SURVEY MARKER - PLS 7048
- SET WITNESS CORNER AS SHOWN - PLS 7048
- NO REBAR SET - IN CANAL



Yellow dot = Pending

SEE PAGE 4 FOR NOTES



Last Cottage Lot

OLD CUTTERS SUBDIVISION
ALPINE ENTERPRISES INC.
KETCHUM, IDAHO
SHEET 2 OF 5



Purple Circle = Duplex Lot



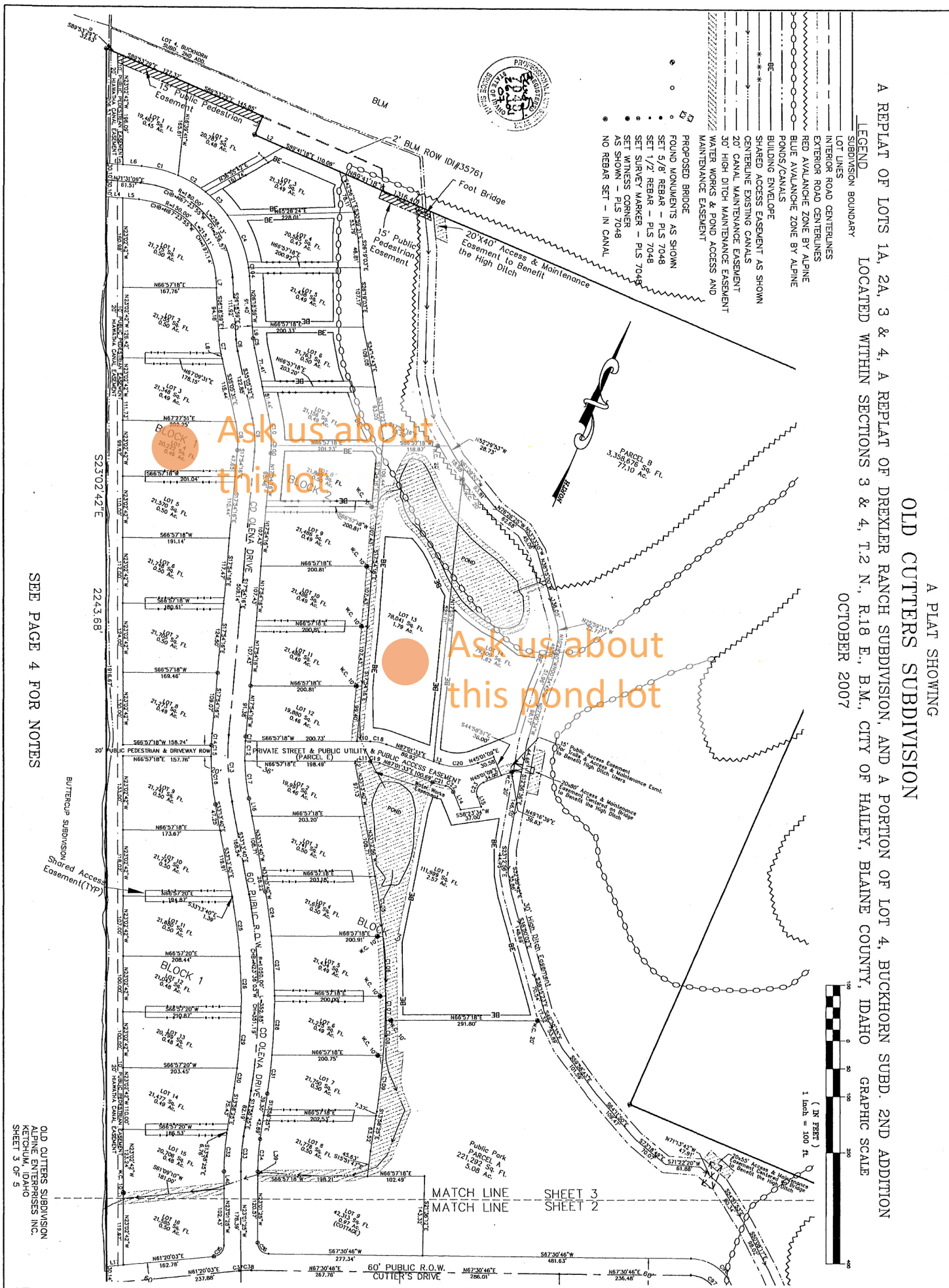
Blue Circle = Single Family Lot

A PLAT SHOWING OLD CUTTERS SUBDIVISION

A REPLAT OF LOTS 1A, 2A, 3 & 4, A REPLAT OF DREXLER RANCH SUBDIVISION, AND A PORTION OF LOT 4, BUCKHORN SUBD. 2ND ADDITION
LOCATED WITHIN SECTIONS 3 & 4, T.2 N., R.18 E., B.M., CITY OF HAILEY, BLAINE COUNTY, IDAHO
OCTOBER 2007

LEGEND

- SUBDIVISION BOUNDARY
- LOT LINES
- INTERIOR ROAD CENTERLINES
- EXTERIOR ROAD CENTERLINES
- RED AVALANCHE ZONE BY ALPINE
- BLUE AVALANCHE ZONE BY ALPINE
- PONDS/CANALS
- BUILDING ENVELOPE
- SHARED ACCESS EASEMENT AS SHOWN
- CENTERLINE EXISTING CANALS
- 30' HIGH DITCH MAINTENANCE EASEMENT
- 20' CANAL MAINTENANCE EASEMENT
- WATER WORKS & POND ACCESS AND MAINTENANCE EASEMENT
- PROPOSED BRIDGE
- FOUND MONUMENTS AS SHOWN
- SET 3/8 REBAR - PLS 7048
- SET 1/2 REBAR - PLS 7048
- SET SURVEY MARKER - PLS 7048
- SET WITNESS CORNER AS SHOWN - PLS 7048
- NO REBAR SET - IN CANAL



MATCH LINE
MATCH LINE

SHEET 3
SHEET 2

60' PUBLIC R.O.W.
CUTTER'S DRIVE

SEE PAGE 4 FOR NOTES

OLD CUTTERS SUBDIVISION
ALPINE ENTERPRISES INC.
IDAHO
SHEET 3 OF 5